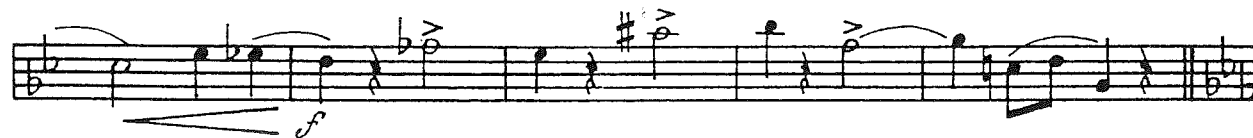
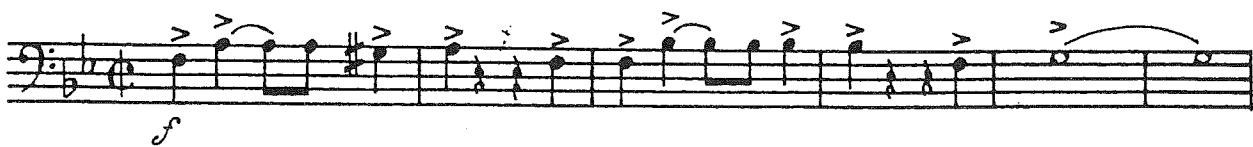




DIXIE - POCHOD

EUFONIO

RUDOLF MYŠKA



DIXIE POLKES

Baryton 1

First staff of music, bass clef, key signature of two flats. It begins with a dynamic marking of *p* and includes a crescendo hairpin.

Second staff of music, bass clef, key signature of two flats. It begins with a dynamic marking of *mf* and includes a crescendo hairpin leading to a dynamic marking of *f*.

Third staff of music, bass clef, key signature of two flats. It includes dynamic markings of *pv* and a circled crosshair symbol.

Fourth staff of music, bass clef, key signature of two flats. It begins with a dynamic marking of *f* and includes various accents.

Fifth staff of music, bass clef, key signature of two flats. It includes various accents and dynamic markings.

Sixth staff of music, bass clef, key signature of two flats. It includes a dynamic marking of *mf* and a circled crosshair symbol.

Seventh staff of music, bass clef, key signature of two flats. It includes a dynamic marking of *ff* and various accents.

Eighth staff of music, bass clef, key signature of two flats. It includes various accents and dynamic markings.

D.S. al Coda

Ninth staff of music, bass clef, key signature of two flats. It begins with a circled crosshair symbol and a dynamic marking of *f*. The word "Coda" is written to the left of the staff.